

A 900.00 Firmware Error Results From a Damaged Scanner Cable

Document ID:SO8533

Usergroup :Partner

[English](#)

Lexmark CX820 Lexmark CX825 Lexmark CX827
Lexmark CX860 Lexmark XC8155 Lexmark XC8160

Solution

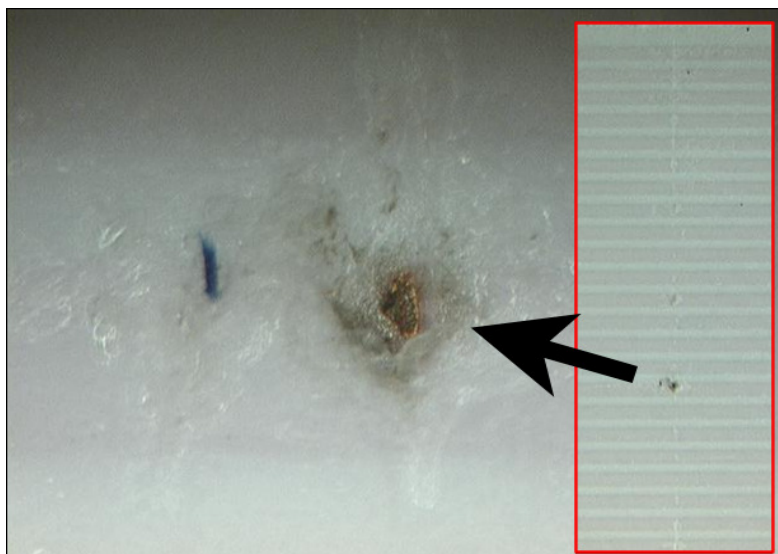
Audience: 'Lexmark and Partners' only

What you will see

A damaged **Flat Flex Cable (FFC)** results in **900.00 firmware errors** related to scanner functions. The most common error posted for this issue looks similar to:

"900.00 Firmware Error, comm Scanmgr.main, reason hydra killed by SIGABRT."

Illustration



NOTE: This cable originates at the controller card's **J1** header and terminates at the flatbed CCDM. It is where this cable passes through the steel frame of the flatbed where the damage occurs.

Affected serial numbers (SN#s)

In early January 2018, a manufacturing solution was implemented to eliminate this issue. If the MFP is manufactured **after January**, then please **escalate** this issue to your next level of support and **product engineering (PE)**.

To verify the date of manufacture, use the **date code** embedded in the SN#'s **5th, 6th** and **7th** digits.

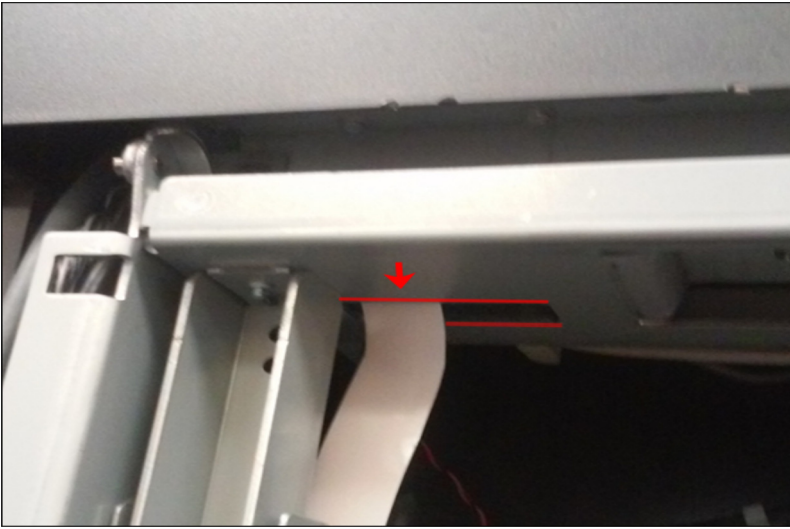
For example, take **SN#** 7564**801**010123.

5th digit = **8** = **2018 (Year)**

6th and 7th digit = 01 = January (Month)

Service action and parts

Apply **tape** to the affected area of the FFC **or replace** the **FFC**.

Step	Action
1	Remove the cover above door B .
2	Locate the area of damage; this is where the scanner's FFC passes through the steel frame . 
3	Apply two layers of electrical tape to the top edge of the frame opening , specifically where the FFC makes contact with frame .
4	Apply one layer of tape on the FFC where cable passes through the frame .
5 Parts	If tape is not an option, or the issue persists, then replace the FFC . PN#: 41X0274 - Flat Flex Cable

Additional information

If necessary, refer to the Service Manual ([CX82x/CX860](#)) for more detailed diagnostic information as well as for FRU removal procedures.